

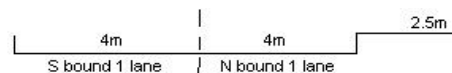
YEAR 2019

COVERAGE (B) STATION 4207

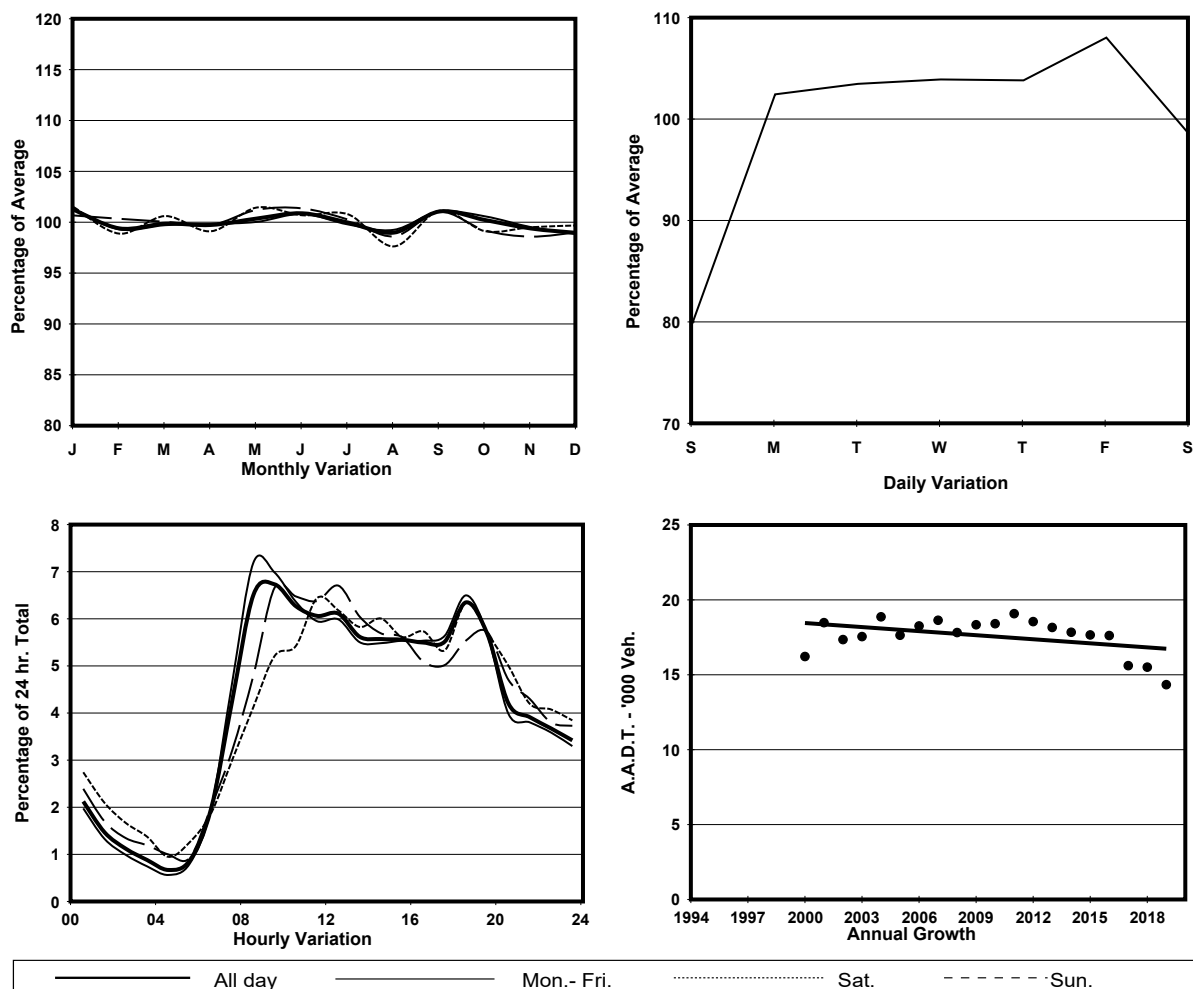
ROAD NETWORK MAJOR

ROAD TYPE DISTRICT DISTRIBUTOR

LINK CHEONG WAN RD & GILLIES AVE S (from RAILWAY TERMINUS to WUHU ST)



## 1. TRAFFIC FLOW VARIATION AND GROWTH



## 2. TRAFFIC CHARACTERISTICS (BY DIRECTION)

Parameter	All - Day	Mon. - Fri.	Sat.	Sun.
<b>SOUTH BOUND</b>				
A.A.D.T.	6510	6990	6370	4740
R 12 / 24 - %	71.3	72.9	68.2	63.5
R 16 / 24 - %	88.9	90	86.8	84
AM Peak Hour	0800-0900	0800-0900	0900-1000	0900-1000
One-way flow at AM peak hour	430	520	370	210
T - % (AM)	-	9.3	-	-
PM Peak Hour	1800-1900	1800-1900	1800-1900	1800-1900
One-way flow at PM peak hour	440	490	370	310
T - % (PM)	-	7.2	-	-
Prop.of commercial vehicles - 16 hr.	-	10.2	-	-
<b>NORTH BOUND</b>				
A.A.D.T.	7830	8140	7900	6830
R 12 / 24 - %	69	69.9	66.4	66.4
R 16 / 24 - %	86.3	86.9	84.9	84.4
AM Peak Hour	0900-1000	0900-1000	0900-1000	0900-1000
One-way flow at AM peak hour	560	600	580	400
T - % (AM)	-	6.5	-	-
PM Peak Hour	1800-1900	1800-1900	1800-1900	1800-1900
One-way flow at PM peak hour	470	490	420	420
T - % (PM)	-	6.9	-	-
Prop.of commercial vehicles - 16 hr.	-	5.8	-	-

## 3. OTHER INFORMATION AND COMMENT

**4. Vehicle classification and occupancy - Monday to Friday**

Time		Class of vehicle									
		Motor Cycle	Private Car	Taxi	Private LB	PLB	Goods veh.		Non Fr. Bus	Fr. Bus	
							Light	M & H		SD	DD
0700-0800	Pro	1.4	13.0	39.1	5.1	14.5	14.5	0.7	5.8	1.1	4.9
	Ocp	1.0	1.5	2.1	9.3	14.0	1.4	1.0	13.4	8.0	29.2
0800-0900 Peak hour	Pro	2.2	29.5	35.8	2.9	8.6	11.4	1.0	5.7	0.5	2.5
	Ocp	1.0	1.4	2.0	2.8	16.6	1.6	1.3	12.1	15.8	29.6
0900-1000	Pro	1.3	29.9	37.1	2.0	8.6	12.6	1.3	3.3	0.6	3.2
	Ocp	1.5	1.4	1.8	1.8	16.4	1.5	1.0	5.4	12.9	21.4
1000-1100	Pro	1.3	21.5	40.9	0.4	11.0	18.5	2.5	0.4	0.7	2.7
	Ocp	1.0	1.4	1.9	4.0	12.0	1.7	1.7	1.0	11.1	17.4
1100-1200	Pro	3.5	23.8	45.3	1.7	14.0	6.4	0.6	0.6	0.6	3.5
	Ocp	1.0	1.3	1.6	1.0	12.4	1.3	1.0	6.0	11.3	26.0
1200-1300	Pro	2.1	22.2	44.4	1.5	9.3	14.5	1.5	1.0	0.5	3.0
	Ocp	1.0	1.4	1.4	6.3	13.5	1.6	1.3	20.5	9.0	20.5
1300-1400	Pro	0.9	25.6	41.7	5.2	9.0	10.0	1.9	1.9	0.5	3.3
	Ocp	1.0	1.6	1.8	3.4	13.0	1.5	1.3	12.8	7.3	16.3
1400-1500	Pro	3.6	22.7	38.2	1.0	10.8	16.0	3.1	0.5	0.5	3.5
	Ocp	1.3	1.5	1.7	2.5	14.1	1.2	2.0	1.0	11.0	18.4
1500-1600	Pro	1.0	22.9	40.0	1.6	7.8	17.7	2.1	3.1	0.5	3.4
	Ocp	1.5	1.4	2.0	2.3	13.3	1.5	2.0	7.0	7.3	17.4
1600-1700	Pro	2.7	31.8	27.4	1.6	12.6	15.9	0.5	3.3	0.4	3.7
	Ocp	1.0	1.4	1.7	7.3	12.7	1.8	2.0	1.5	10.0	25.7
1700-1800	Pro	3.2	36.8	30.9	1.1	10.7	8.5	0.5	3.2	0.7	4.5
	Ocp	1.3	1.4	1.9	3.0	15.7	1.4	2.0	1.0	7.4	28.9
1800-1900	Pro	1.9	37.2	34.5	0.8	10.4	8.1	0.4	2.7	0.3	3.7
	Ocp	1.0	1.7	2.1	1.0	15.8	1.6	1.0	1.0	30.7	40.7
1900-2000	Pro	1.5	45.1	33.2	0.0	9.9	3.5	0.0	3.0	0.2	3.6
	Ocp	1.0	1.6	1.8	0.0	16.4	1.4	0.0	1.2	12.0	17.0
2000-2100	Pro	1.5	33.7	40.5	0.0	13.0	3.8	0.0	1.5	0.4	5.5
	Ocp	2.0	1.5	1.7	0.0	12.6	1.8	0.0	3.0	9.5	13.1
2100-2200	Pro	1.7	30.5	39.2	0.0	16.6	4.4	0.0	1.7	0.4	5.4
	Ocp	1.0	1.7	2.1	0.0	10.7	1.4	0.0	22.0	3.5	11.5
2200-2300	Pro	3.2	27.4	40.2	0.0	17.7	2.4	0.8	2.4	0.4	5.4
	Ocp	1.0	1.9	1.9	0.0	8.5	1.3	2.0	2.3	8.0	8.7
16 hours	Pro	2.0	28.7	37.7	1.6	10.9	11.1	1.1	2.6	0.5	3.7
	Ocp	1.1	1.5	1.8	4.0	13.7	1.5	1.6	7.3	11.1	22.0

**Legend: Pro.** Proportion of vehicles in % (Sum may not add up to 100% due to figure rounding)\*

**Ocp.** Average occupancy of vehicles including both driver and passengers\*

**M&H** Medium and Heavy

\* All traffic data are collected from combined bounds